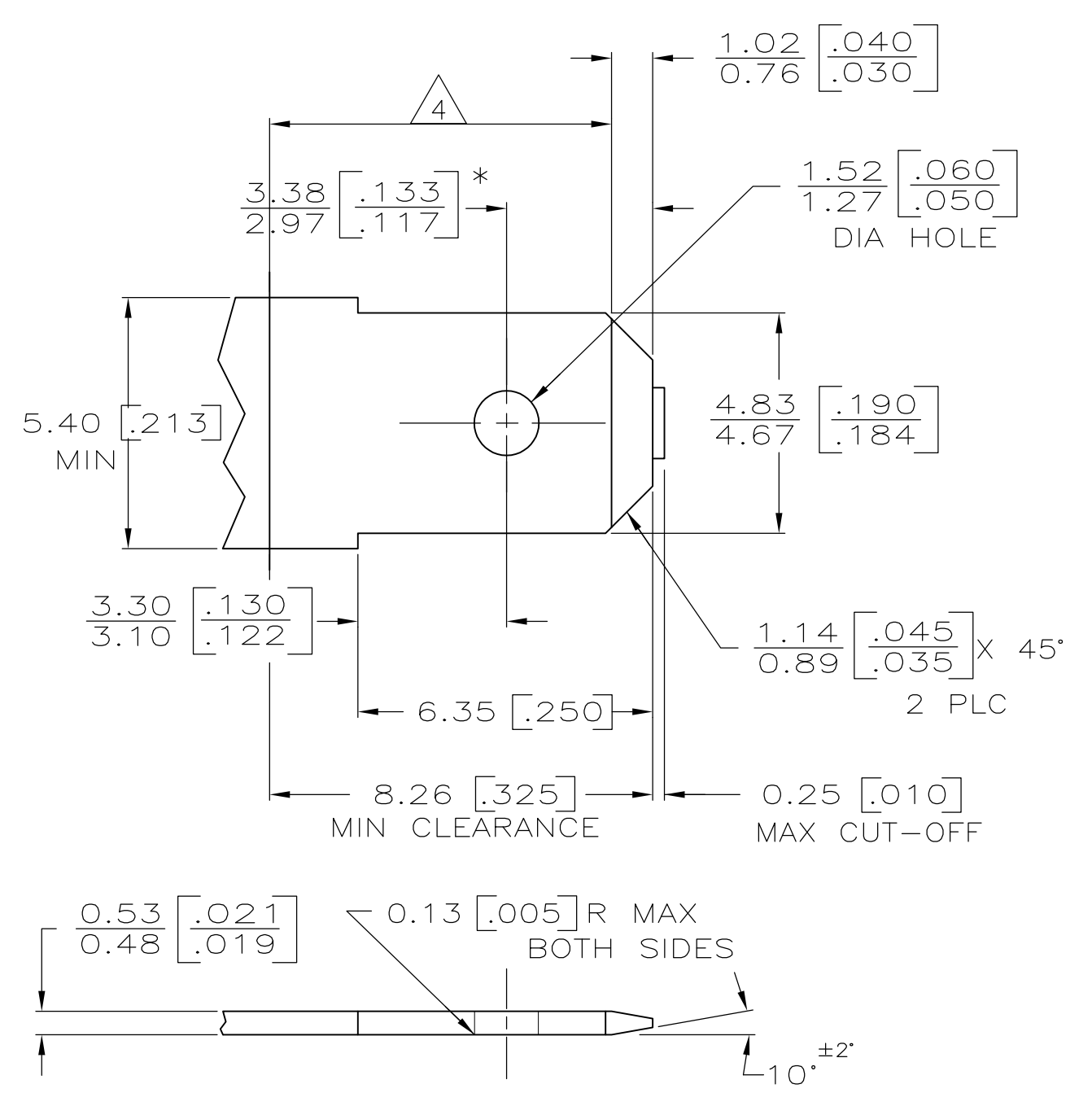
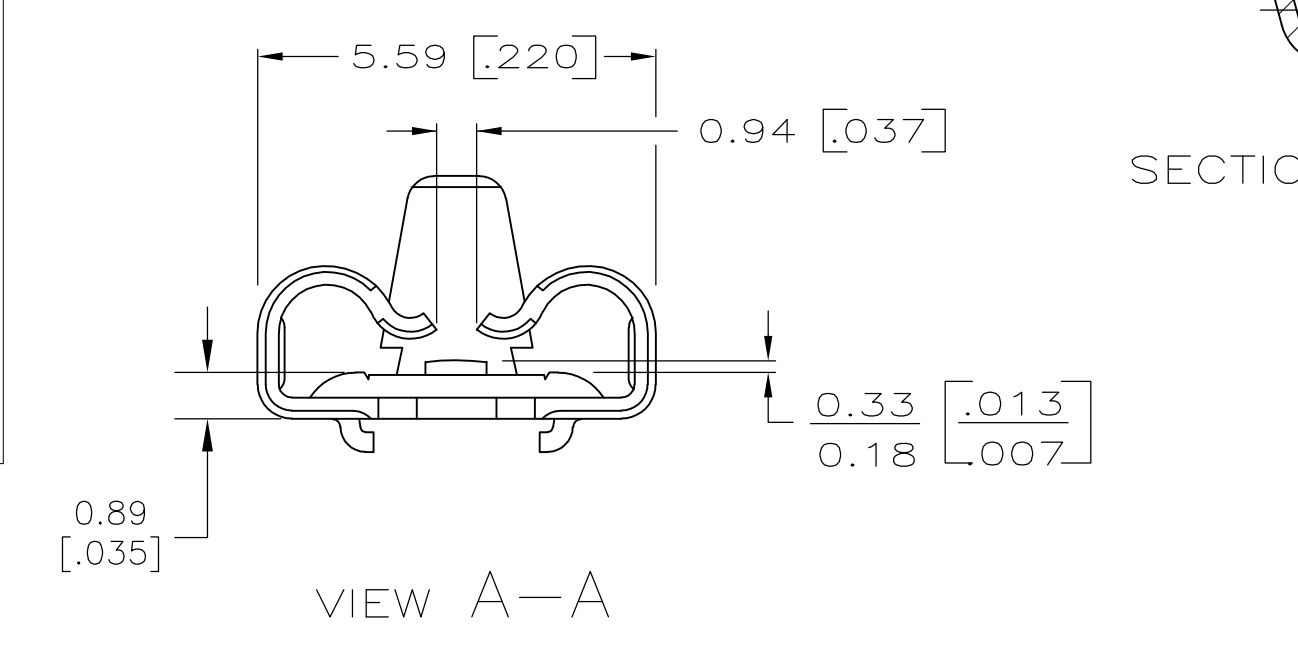
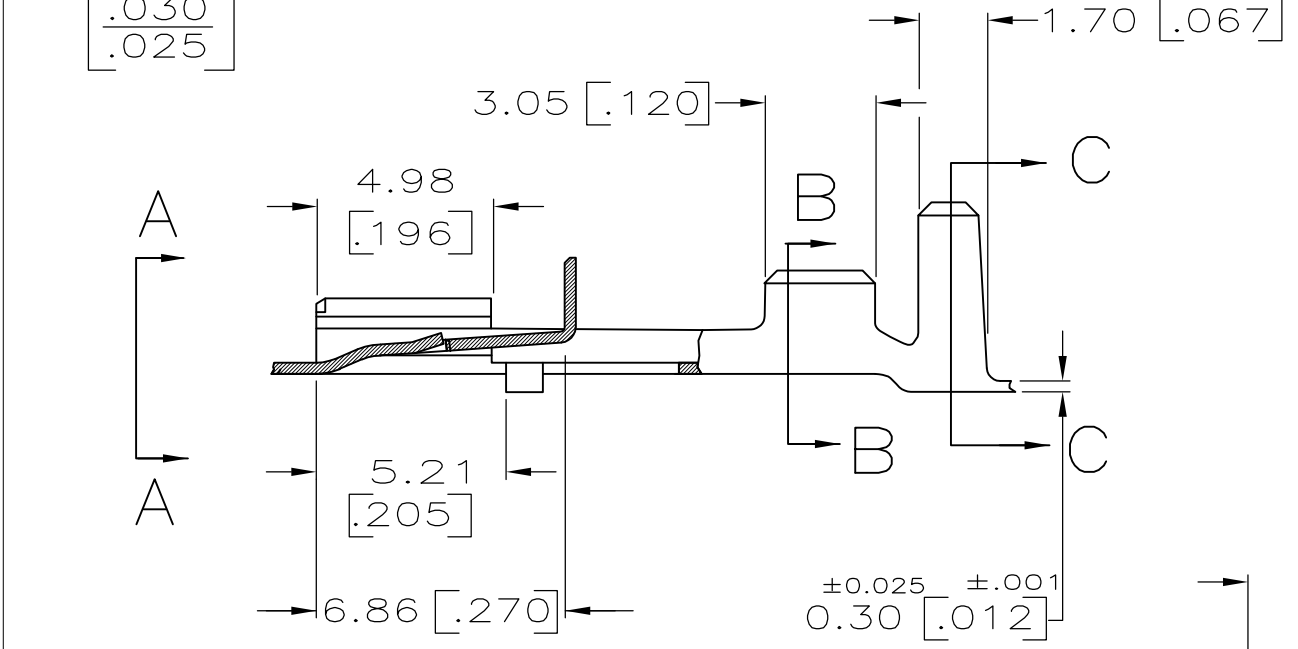
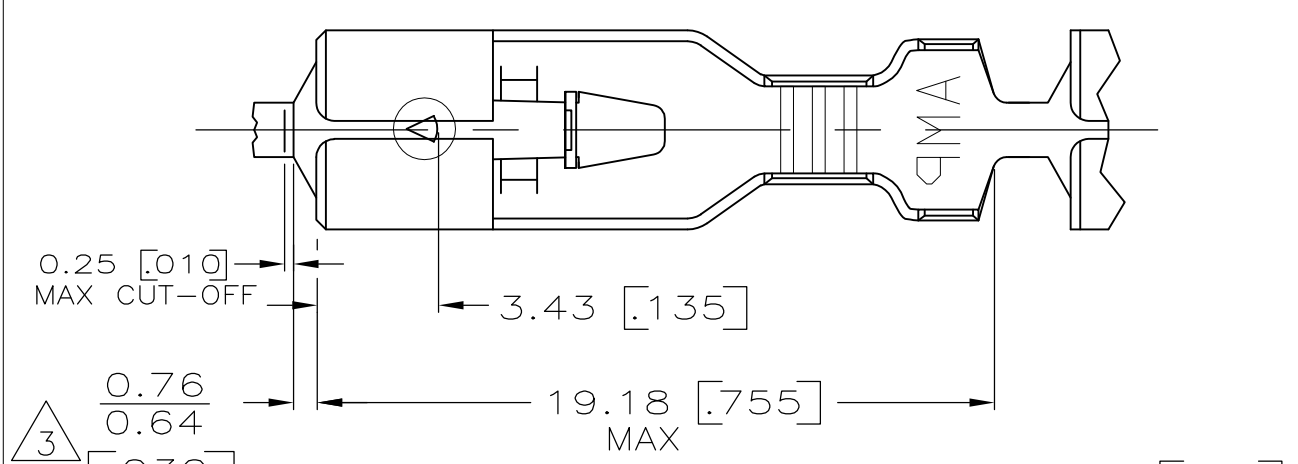


| LOC | DIST | REVISIONS   |                           |         |        |
|-----|------|-------------|---------------------------|---------|--------|
| P   | LTR  | DESCRIPTION | DATE                      | OWN     | APVD   |
| AF  | 50   | J4          | REVISED PER ECR 08-021823 | 11SEP08 | HMR EH |

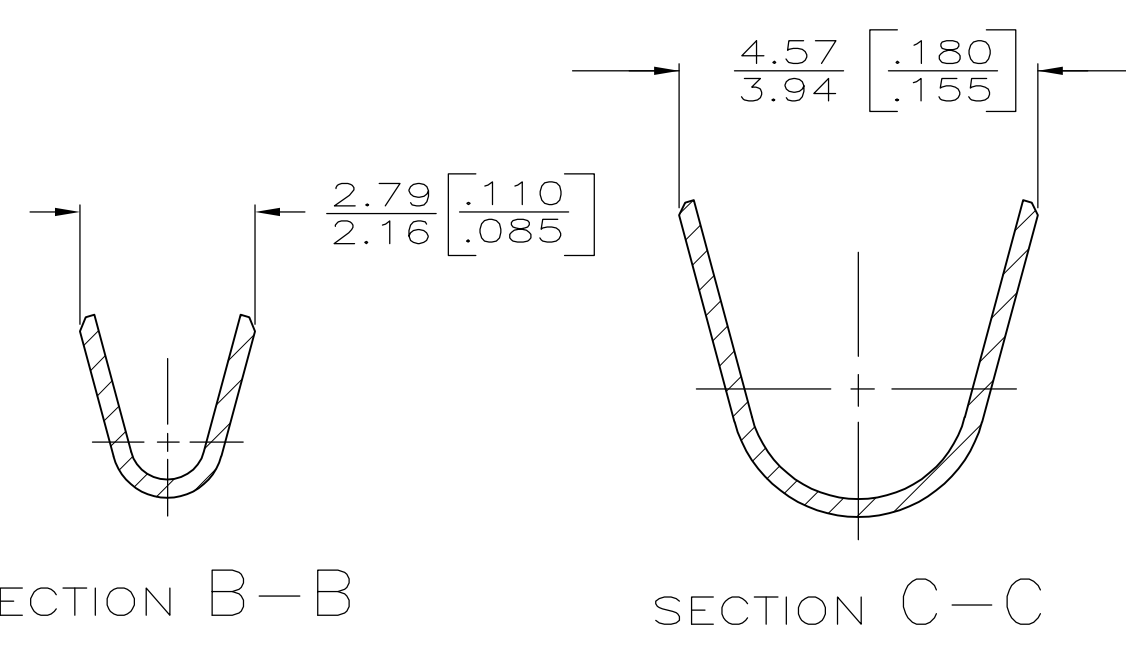
SUGGESTED MATING TAB



- 1 MATL: #2 HARD BRASS OR NICKEL PLATE STEEL.
- 2 NO BURRS PERMISSIBLE AT HOLE.
- 3 TIN PLATING IS REQUIRED ON BRASS WHEN TERMINAL TEMPERTURE IS OVER 225° F.
- △4 MUST BE FLAT WITHIN 0.076 [003] OVER THIS LENGTH.
- 5 HOLE MUST BE SYMMETRICAL ABOUT TAB  $\bar{C}$  WITHIN 0.076 [003]
- \* TO BE USED ONLY WHEN SHOULDER IS ELIMINATED.



- 1 DIMENSIONS IN BRACKETS ARE IN INCHES.
- 2 CONTINUOUS STRIP ON REELS.
- △3 THE 0.76 [0.030] / 0.64 [0.025] DIMENSION MUST BE MAINTAINED BY THE APPLICATOR CUT-OFF TO ENSURE THE PROPER LOCKING FUNCTION OF THE RECEPTACLE.
- 4 WIRE SIZE IS FOR A [#24-#20] AWG.
- 5 INSULATION RANGE IS 1.52-2.79 [0.060-.110] DIA.
- △6 GOLD PLATE 0.00127 [0.000050] MIN THK OVER 0.00127 [0.000050] MIN NICKEL PL.
- △7 GOLD FLASH PL. 0.00012 [0.000005] MIN THK OVER 0.00127 [0.000050] MIN NICKEL PL
- △8 PRELIMINARY - NOT FOR PRODUCTION



| FINISH           | MATERIAL  | PART NO.   |
|------------------|-----------|------------|
| GOLD / NICKEL △7 | H06 BRASS | △8 63196-5 |
| ---              | H06 BRASS | 63196-4    |
| GOLD / NICKEL △6 | H06 BRASS | △8 63196-3 |
| PRE-TIN          | H06 BRASS | 63196-2    |
| TIN              | H06 BRASS | 63196-1    |

THIS DRAWING IS A CONTROLLED DOCUMENT.

|             |   |                  |   |           |            |               |
|-------------|---|------------------|---|-----------|------------|---------------|
| DWN         | JR RUTH   | 2/28/87          | Tyco Electronics Corporation<br>Harrisburg, PA 17105-3608 |           |            |               |
| CHK         | G YETTER  | 3/9/87           |   |           |            |               |
| APVD        | R KUZO  | 3/9/87           |   |           |            |               |
| NAME        | RECEPTACLE, POSITIVE LOCK, .187 SERIES  |                  |   |           |            |               |
| DIMENSIONS: | TOLERANCES UNLESS OTHERWISE SPECIFIED:  | PRODUCT SPEC     | SIZE  | CAGE CODE | DRAWING NO | RESTRICTED TO |
| mm [INCHES] | 0 PLC ± -<br>1 PLC ± -<br>2 PLC ± -<br>3 PLC ± 0.25 .010<br>4 PLC ± -<br>ANGLES ± - | APPLICATION SPEC | A2  | 00779     | 63196      | -             |
| MATERIAL    | FINISH  | WEIGHT           | CUSTOMER DRAWING  |           | SCALE      | SHEET         |
| SEE TABLE   | SEE TABLE   | -                | 5:1   |           | 1 OF 1     | REV J4        |